

Walk and wheel along, exploring the sights and sounds of the Rivers Ouseburn and Tyne.

Tyne Derwent Way & Ouseburn



BLOSSOM TRAIL



Design & illustration:
Paulina Malowaniec

Project naturalist:
Heather Dewey from Wild Intrigue



Follow this route
on the
Go Jauntly
app!



This work is licensed under CC BY-SA 4.0. To view a copy of
this license, visit: creativecommons.org/licenses/by-sa/4.0



The Tyne Derwent Way and Ouseburn Blossom trail takes you from the Metrocentre to Ouseburn Community Farm. This booklet is designed to guide you along the route with an indication of blossom you will see along the way. We've included flowers you will spot in late spring or early summer, but you can walk the routes all year around and see what is changing and what is blooming. Why not colour-in as you go?

Stroll, relax, listen and enjoy!



National
Trust

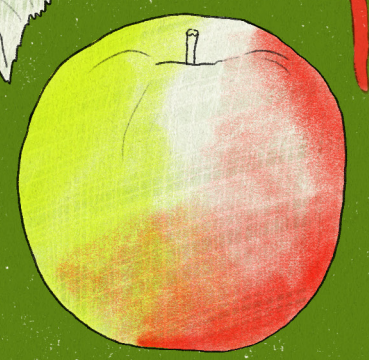
TYNE
DERWENT
WAY



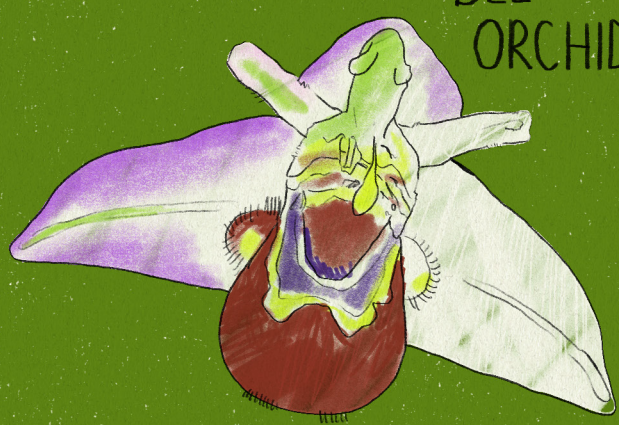
COMMON PEAR



SILVER BIRCH



APPLE TREE



BEE ORCHID

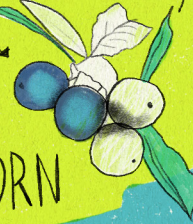


ROSEBAY WILLOWHERB

BRAMBLE



BLACKTHORN



HAWTHORN



WILLOW



Queen Elizabeth II Bridge

King Edward VII Bridge

Redhugh Bridge

RIVER TYNE

TIDAL BASIN

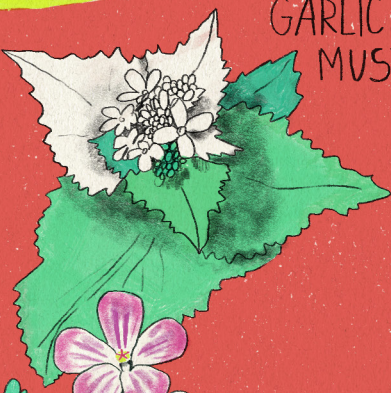
WILD CHERRY



DAFFODIL



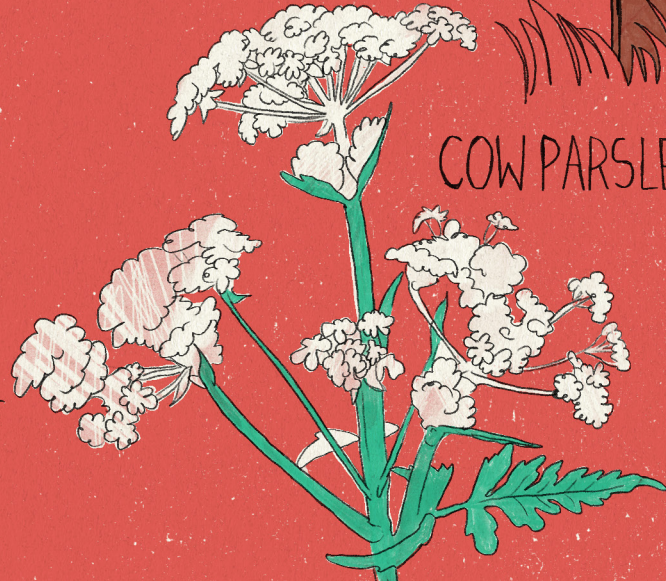
GARLIC MUSTARD



GORSE



COW PARSLEY



HERB ROBERT



DOGROSE





RED CLOVER

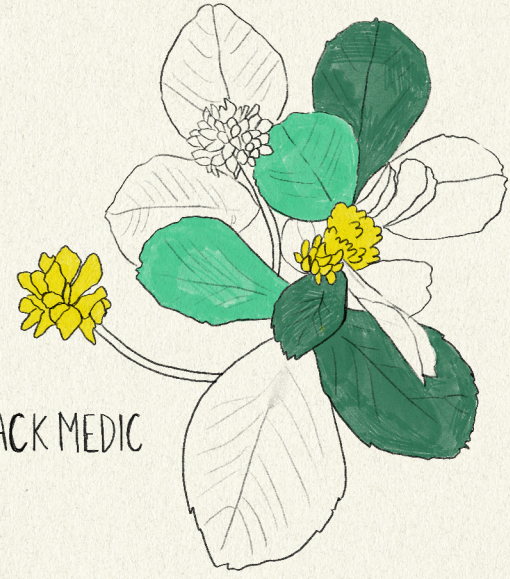
BIRD'S-FOOT TREFOIL



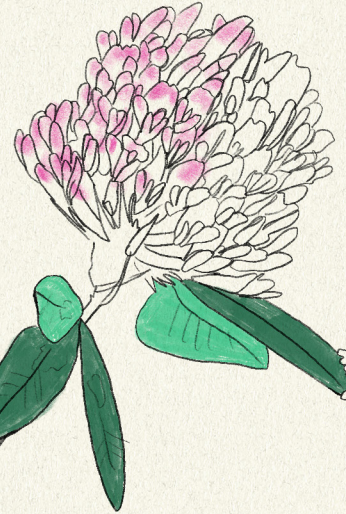
OXEYE
DAISY



BLADDER
CAMPION

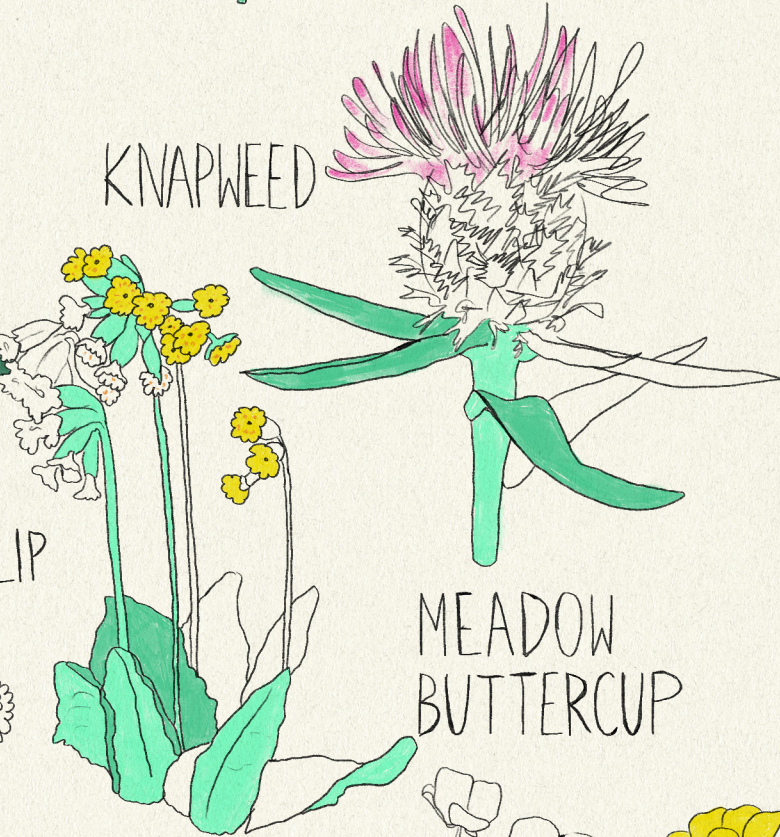


BLACK MEDIC



COWSLIP

KNAPWEED



MEADOW
BUTTERCUP



BETONY



TUFTED VETCH



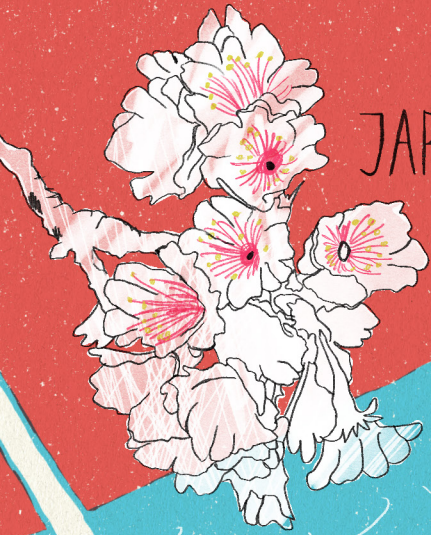
YELLOW RATTLE



FIELD SCABIOUS

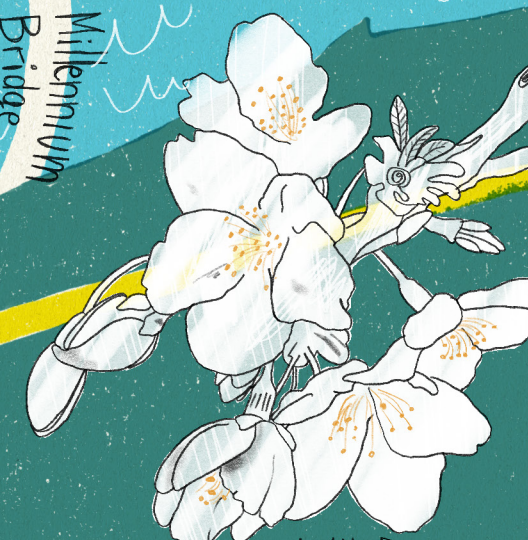


JAPANESE
CHERRY



RIVER TYNE

Millennium
Bridge



WILD
CHERRY

Tyne Bridge

HILLGATE

ST MARY'S BY
THE TYNE



SALAD
BURNET



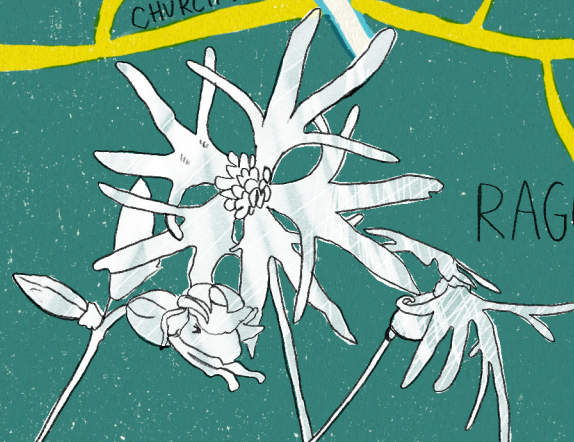
COMMON
SORREL

St Mary's by the Tyne
to Millennium Bridge
20 minutes walk

HILLGATE
CHURCH ST.

CANNON ST.

RAGGED
ROBIN



Byker Bridge

Ouseburn farm

Sweet Pea

Elder tree

Cherry plum

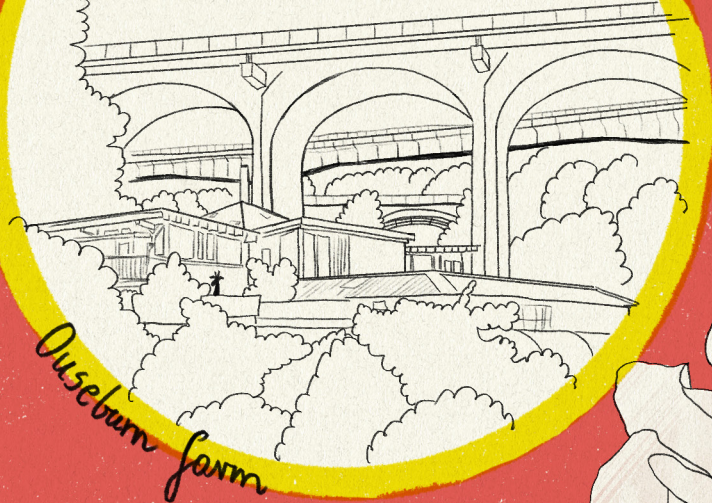
Toadflax

Lime St

Riverside Walk

Byker Bank

City Rd



Chamomile

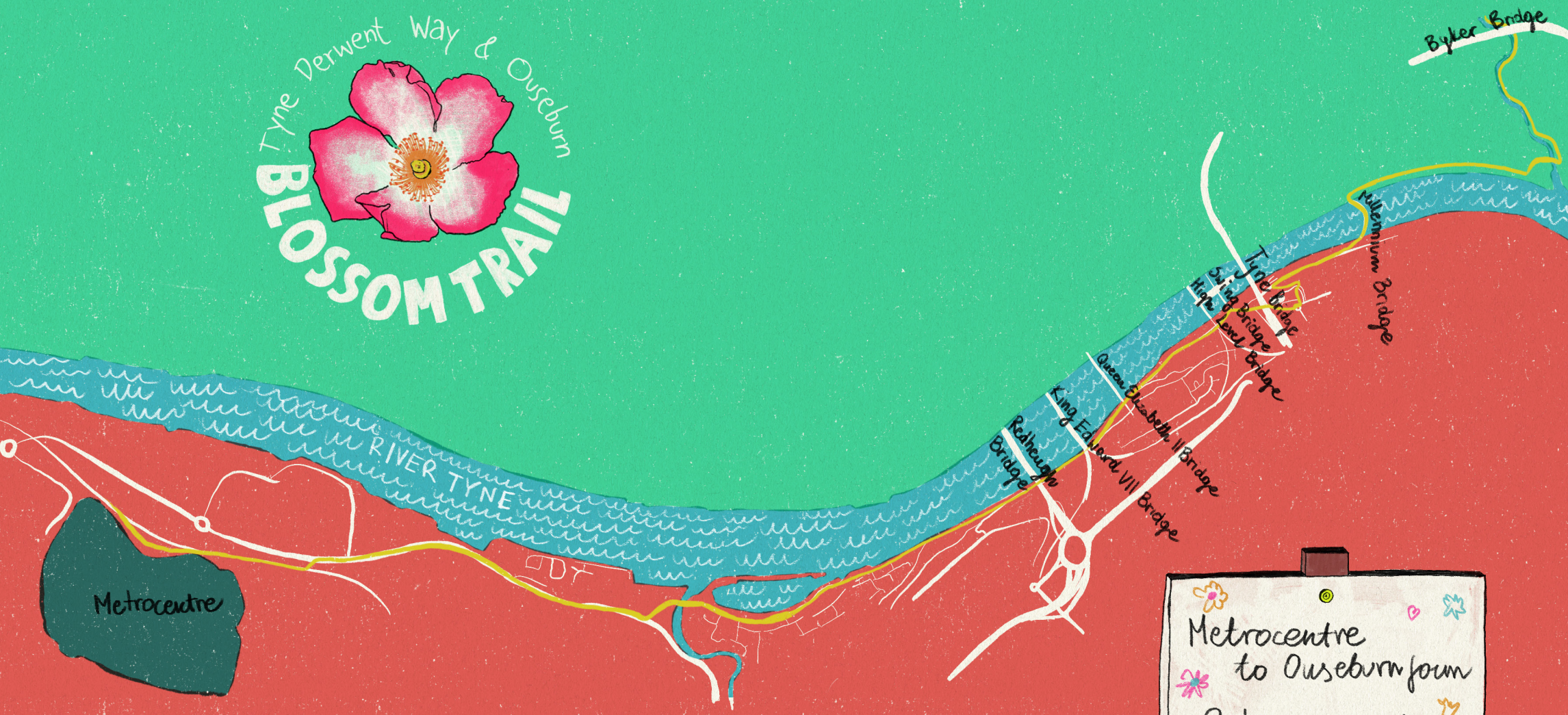


Hadrian's Wall Path
to Ouseburn Farm

15 minutes
walk



Tyne Derwent Way & Ouseburn
BLOSSOM TRAIL



Metrocentre

Metrocentre
to Ouseburn farm
2 hours walk



Tyne Derwent Way & Ouseburn
BLOSSOM TRAIL

